

Attention SP81610/SP85015

As always, the steering system needs to be flushed thoroughly when replacing one of the components.

The SP81610/SP85015 (both petrol engines for BMW E46) are an obvious proof of this. Through the following images we will try to explain why.



Figure 1

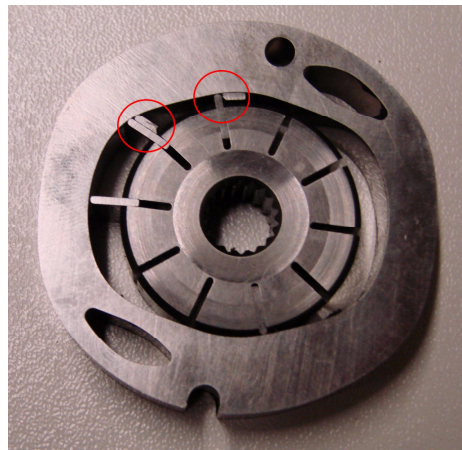


Figure 2

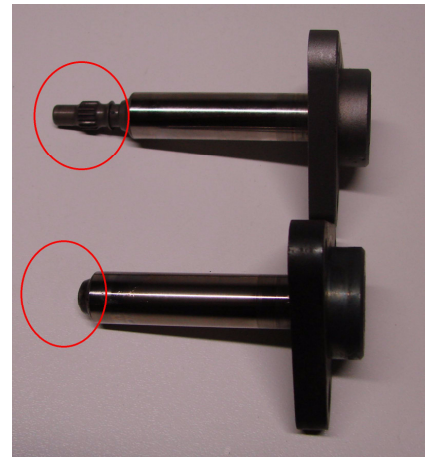


Figure 3

The rotor rotates in an oval chamber (figure 2), so that the vanes can move up and down in their seat. In a polluted system, the vanes can get blocked in their seat and / or break (circled in figure 2). In these cases the shaft breaks off (figure 3), because it remains driven as it is in direct connection with the engine.

It is recommended with these types of pumps (SP81610/SP85015) to flush very thoroughly, but also to use the magnetic filter (HF002) to intercept any future impurities.

P.S.: Pumps that are submitted with this phenomenon, will be rejected for warranty.